

# VariPOS

Smart Dual Hinged design  
for the ultimate flexibility

250 S / A

270 S / A



reddot winner 2020





## Features

### Flexibility meets demand with dual hinged stand allowing extreme tilt

Easy adjustment providing a solid platform allowing extremely flexible height and angle adjustment. The stand can be folded flat or adjusted to any view angle providing maximum comfort and optimal efficiency to the POS operation.

### Hidden cable management - keeping everything organized

The Dual Hinge Stand provides hidden cable management channels to organize & reduce clutter when connecting power & accessory cables; the cables are concealed within the stand and covered with a securing plate maintaining the aesthetic look.



## Powerful and flexible VariIO I/O Box connectivity

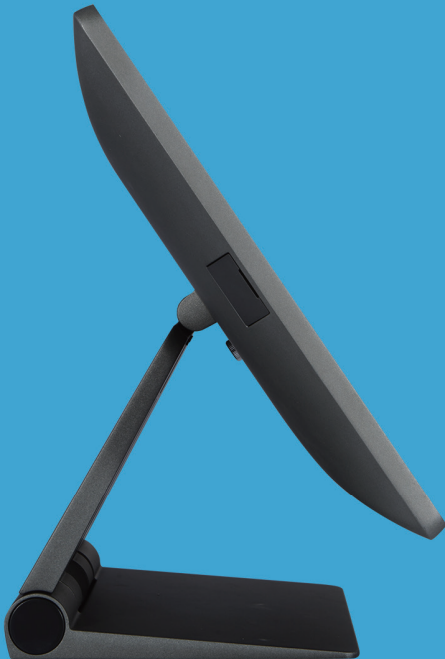
VariPOS 250S&A / 270S&A can be combined with the dedicated VariIO I/O Box, offering the standard I/O connections plus Point of Sale specific connections for multiple projects.



## Simplified installation and serviceability

VariIO I/O Box connected by a single custom high speed USB Type C connector can easily be disconnected leaving the I/O and peripherals in place. (PE19)

# Detailed Features



- Full range of CPUs from Celeron to Intel 6th/7th/8th generation Core i3/i5.
- True flat 15" 4:3 LCD, 400 nits / 17" 5:4 LCD, 400 nits (LED backlight) with IP66 protection.
- Dual Hinged Stand for Maximum Flexibility (Supports Any Angle from Flat/Low Profile to 62°/PPC 150°). Secure Base attachment (75 x 75) to surface.
- Hidden Cable Management channels organize & reduce clutter when connecting accessory cables.
- PE17 - Efficient onboard panel I/O interface (LAN + 2 USB)
- Extendable I/O capability to meet any project specification (Optional).
- Quick SWAP Design for easy maintenance.
- Peripheral compatibility across the whole VariPOS 2 Series: 2D Scanner, RFID, MSR, iButton & Fingerprint.

# Ordering Information

## VariPOS 250S/270S (Optional VariIO I/O Box-PE18)

### PE17

- |                 |   |
|-----------------|---|
| ▪ i5-7300U      | Intel® Kaby Lake Core™ i5-7300U CPU up to 3.5 GHz |
| ▪ i3-6100U      | Intel® Sky Lake Core™ i3-6100U 2.3 GHz CPU        |
| ▪ Celeron 3955U | Intel® Sky Lake Celeron® 3955U 2.0 GHz CPU        |

## VariPOS 250A/270A (Optional VariIO I/O Box-PE19)

### PE22

- |                  |  |
|------------------|--|
| ▪ i5-8365UE      | Intel® Whiskey Lake Core™ i5-8365UE up to 4.10 GHz CPU |
| ▪ i3-8145UE      | Intel® Whiskey Lake Core™ i3-8145UE 3.90 GHz CPU       |
| ▪ Celeron 4305UE | Intel® Whiskey Lake Celeron® 4305UE 2.00 GHz CPU       |

### PE24

- |                 |   |
|-----------------|---|
| ▪ Celeron J6412 | Intel® Elkhart Lake Celeron®J6412 2.60GHz CPU |
|-----------------|---|



Multi-touch Screen



Dual Hinged Stand



Quick & Easy Maintenance



Extendable VariIO I/O Box  
Custom Type C connector



Waterproof - IP66 on Front Panel



# Specification

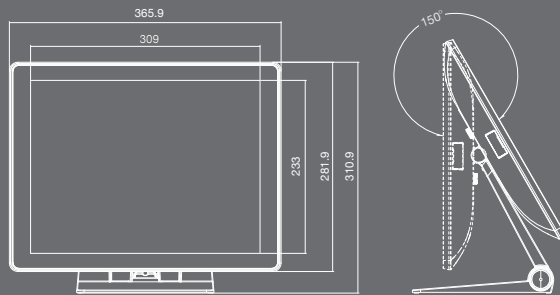
Model Name		• VariPOS 250S/270S (PE17)	• VariPOS 250A/270A (PE22)	• VariPOS 250A/270A (PE24)
Main Board	Processor	Intel® Core™ i5-7300U Intel® Core™ i3-6100U Intel® Celeron® 3955U	Intel® Core™ i5-8365UE Intel® Core™ i3-8145UE Intel® Celeron®4305UE	Intel® Celeron® J6412
	Chipset	CPU Integrated		
	System Memory	1 x SO-DIMM DDR4 slot, 4GB RAM as standard. Max. memory support up to 16 GB.		
	TPM	Intel F/W		
	Intel AMT	Only i5 CPU		N/A
Display & Touch	LCD Size	15" - 4:3 / 17" - 5:4 TFT LCD (LED backlight)		
	Brightness	400 nits		
	Resolution	15" - 1024 x 768 (4:3) / 17" - 1280 x 1024 (5:4)		
	Touch	True Flat Projected Capacitive Technology		
Storage	HDD/SSD	1 x SATA III (2.5")	1 x SATA III (2.5") or M.2 Storage (Option)	
Panel I/O	LAN Port	1 x Gigabit Ethernet by RJ-45		
	USB Port	2 x USB 3.0	2 x USB 2.0, 4 x USB 3.1	3 x USB 2.0, 3 x USB 3.1
	Speaker	HD Audio, 2W Speaker x 2		
	Power Switch	1 x power on/off button		
	COM Port	N/A	2 x RJ48 (Support DC+0/5/12v by BIOS setting, default setting is 0v)	
	Cash Drawer	N/A	1 x RJ11 (Support DC+12v or +24v (default) port supports 2 cash drawers	
	DC Input	1 x Mini Din 4P (DC+19v only)		
	Cash Drawer	1 x RJ-11 (Support DC +12V or +24V (default)) port supports 2 cash drawers		
VariIO I/O Box & Expansion (Optional)	LAN Port	1 x Gigabit Ethernet by RJ-45		
	USB Port	2 x USB 3.0; 4 x USB 2.0		
	Powered USB Port (Project Based)	2 x DC+12v Powered USB 1 x DC+24v Powered USB		
	COM Port	4 x RS-232 (jumper setting, support DC+0/5/12v, default setting is 0v)		
	Type C	N/A	1 x Type C	
	OS Support	Win 10 (64bit) / Win 7 (32bit/64bit)		Windows 10 (64bit)
Power Adapter ( External adapter )		Voltage:+19VDC, Std. 90 watt *PUSB will use 180 watt adapter		Voltage:+19VDC, Std. 65 watt *PUSB will use 180 watt adapter
Compliance	Certifications	CE, FCC, LVD, RoHS		
Material	Main Unit: Die-Cast Aluminum			
Color	Main Unit: Space Gray / Black			
Dimension ( W x H x D mm )		15" - 365.893 x 281.89 x 43.23 (PPC) / 17" - 396.93 x 329.47 x 42.75 (PPC)		
Environmental Condition	Operating	0°C ~ 40°C, 10% ~ 90% RH, non-condensing		
	Storage	-20°C ~ 60°C, 10% ~ 90% RH, non-condensing		

Model Name		• VariPOS 250S/270S (PE17)	• VariPOS 250A/270A (PE22)	• VariPOS 250A/270A (PE24)
Optional Accessories	MSR	ISO 3-Tracks Slim MSR USB Type		
	iButton	Dallas Key Reader, USB Type		
	RFID	13.56Mhz USB Type		
	Fingerprint	Digital Persona U.are.U 4500 Module USB Type		
	Scanner	2D scanner, USB Type		
	2nd Display	10.1" Resolution 1280 x 800 (16:10 wide screen) USB Type, with or without True-flat P-cap 10 point Multi-touch		
	LCM	2x20 USB Type		

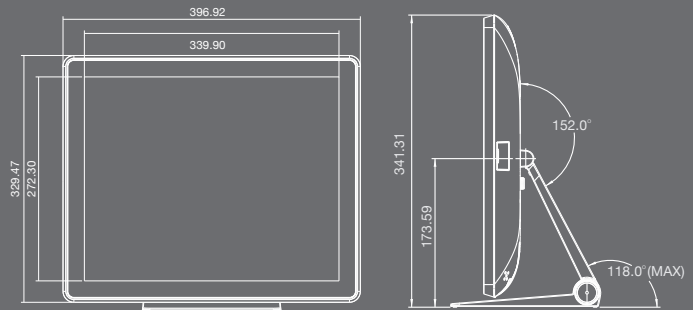
\* The right has been reserved to change the specification without prior notice.

# Dimensions

VariPOS 250S/250A (15")

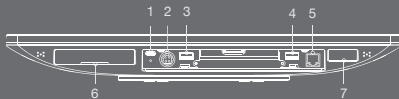


VariPOS 270S/270A (17")



## Panel PC IO Interface

VariPOS 250S/270S (Sky Lake/Kaby Lake-PE17)



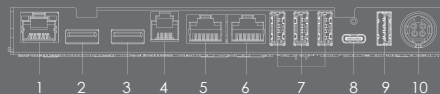
1. USB Type C
2. DC 19V
3. USB 3.0
4. USB 3.0
5. LAN
6. 2.5" HDD
7. POWER

VariPOS 250A/270A (Whiskey Lake-PE22)



1. LAN
2. USB 3.0
3. USB 3.0
4. Cash Drawer
5. COM2
6. COM1
7. USB 2.0
8. USB 2.0
9. USB 3.0
10. USB Type C
11. USB 3.0
12. DC 19V

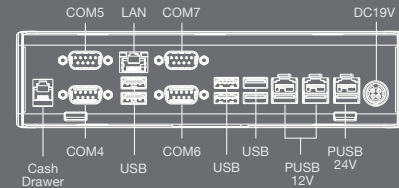
VariPOS 250A/270A (Elkhart Lake-PE24)



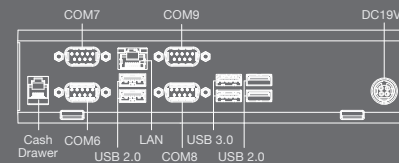
1. LAN
2. USB 3.0
3. USB 3.0
4. Cash Drawer
5. COM2
6. COM1
7. USB 2.0
8. USB Type C
9. USB 3.0
10. DC 19V

## VariIO I/O Box

(PE18)



(PE19)





**Poindus Systems Corp. Headquarters | [www.poindus.com](http://www.poindus.com)**

5F, No.59, Ln. 77, Xing-Ai Rd., Neihu Dist., Taipei City 114, Taiwan. R.O.C

☎ + 886 27721 4688

📠 + 886 27721 2289

✉ [sales@poindus.com](mailto:sales@poindus.com)

### **Germany**

ADASYS GmbH Elektronische Komponenten  
Max-Planck-Str. 10 70806 Kornwestheim

☎ + 49 7154 83000

📠 + 49 7154 8300 599

✉ [info@adasys.de](mailto:info@adasys.de)

### **UK**

12 Chancerygate Business Centre, Whiteleaf Road,  
Hemel Hempstead HP3 9HD

☎ + 44 330 555 0081

📠 + 44 330 555 0082

✉ [puk@poindus.com](mailto:puk@poindus.com)

### **Spain/Portugal**

C/ Los Sueños 14, Polígono Industrial Santa Cruz  
29004 Málaga-Spain

☎ +34 956 108 777

✉ [info@poindus.es](mailto:info@poindus.es)